



Cyberlogic Control Panel Help

*Control Panel Utility for
Cyberlogic Software*

CYBERLOGIC CONTROL PANEL HELP

Version 9

Copyright © 2010-2017, Cyberlogic® Technologies Inc. All rights reserved.

This document and its contents are protected by all applicable copyright, trademark and patent laws and international treaties. No part of this document may be copied, reproduced, stored in a retrieval system or transmitted by any means, electronic, mechanical, photocopying, recording or otherwise, without the express written permission of Cyberlogic Technologies Inc. This document is subject to change without notice, and does not necessarily reflect all aspects of the mentioned products or services, their performance or applications. Cyberlogic Technologies Inc. is not responsible for any errors or omissions in this presentation. Cyberlogic Technologies Inc. makes no express or implied warranties or representations with respect to the contents of this document. No copyright, trademark or patent liability or other liability for any damages is assumed by Cyberlogic Technologies Inc. with respect to the use of the information contained herein by any other party.

Cyberlogic®, DHX®, MBX®, WinConX® and Intelligent • Powerful • Reliable® are registered trademarks and DirectAccess™, OPC Crosslink™, OPC Datacenter™, DevNet™ and C-logic™ are trademarks of Cyberlogic Technologies Inc. All other trademarks and registered trademarks belong to their respective owners.

Document last revision date May 9, 2017

TABLE OF CONTENTS

Introduction4

Using the Cyberlogic Control Panel.....5

 Firewall Exceptions..... 6

 Server Startup 7

 Cyberlogic OPC Users 9

 Manual Settings 10

INTRODUCTION

You must configure the security settings within the Windows operating system to allow the OPC server to run and communicate with clients and servers on the local system and on remote systems. This requires you to configure the Windows firewall exceptions, the startup user account, and the OPC user group permissions. The Cyberlogic Control Panel is a utility that makes it simpler to configure these settings. It is included as a part of all Cyberlogic OPC products.

Caution! You must also configure the Windows DCOM security settings to permit proper OPC operation. You can find the requirements for those settings in the [Cyberlogic OPC Server Help](#) file, **Editor Options** section, under the heading **Security Tab**.

Caution! If the OPC server and OPC client applications are on different systems, you must configure the proper security settings on both systems. This is necessary because the OPC callback mechanism causes the OPC client to function as a DCOM server and the OPC server to function as a DCOM client.

Get More Information

A detailed discussion of all of these requirements may be found in the document *OPC & DCOM: A Guide to Using the Cyberlogic OPC Server via DCOM*. A copy of this document was installed on your system along with the software.

To access it, open the Windows **Start** menu, and navigate to **Cyberlogic Suites**. From there, open the **Help** sub-menu, then open the **OPC** sub-menu, and then select **DCOM Help**.

Print a Copy of This Document

The content of this document is also provided in PDF format. PDF files can be viewed using the Adobe® Reader program, and can also be used to print the entire document.

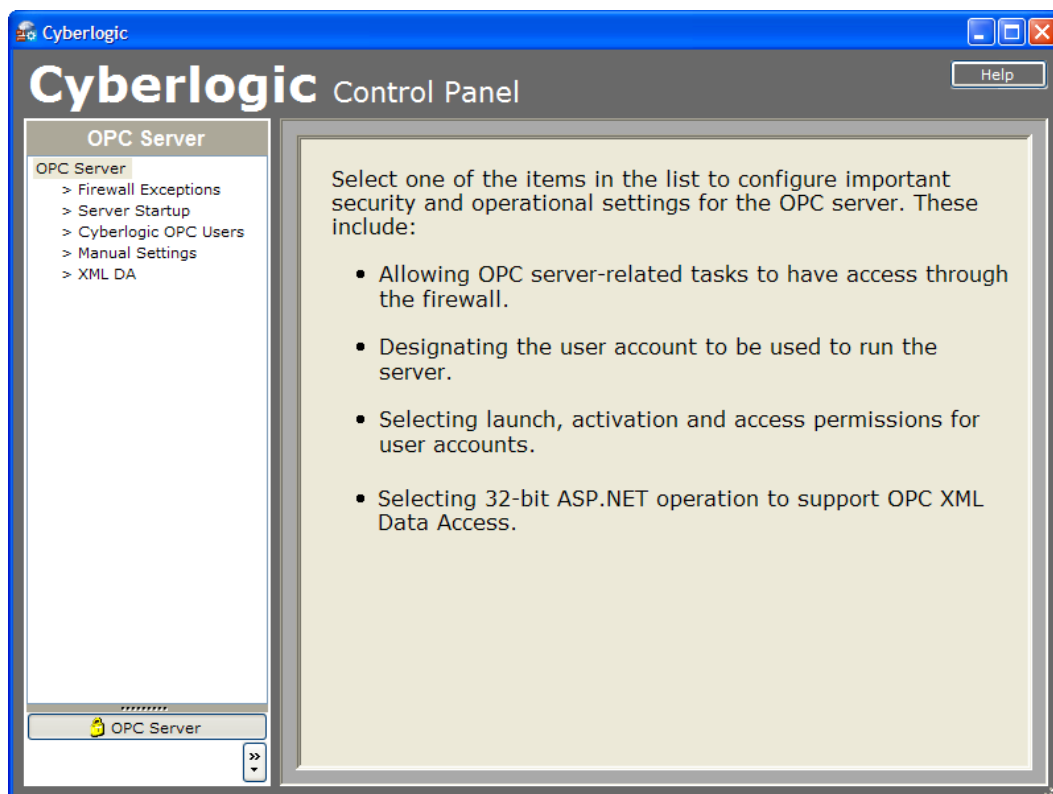
Contact Technical Support

To obtain support information, open the Windows **Start** menu and go to **Cyberlogic Suites**, and then select **Product Information**.

USING THE CYBERLOGIC CONTROL PANEL

The Cyberlogic Control Panel utility is included with all Cyberlogic OPC product suites, and is installed automatically as part of the suite.

To open the Cyberlogic Control Panel, open the Windows **Start** menu and go to **Cyberlogic Suites**. From there, open the **Configuration** sub-menu, and then select **Cyberlogic Control Panel**.

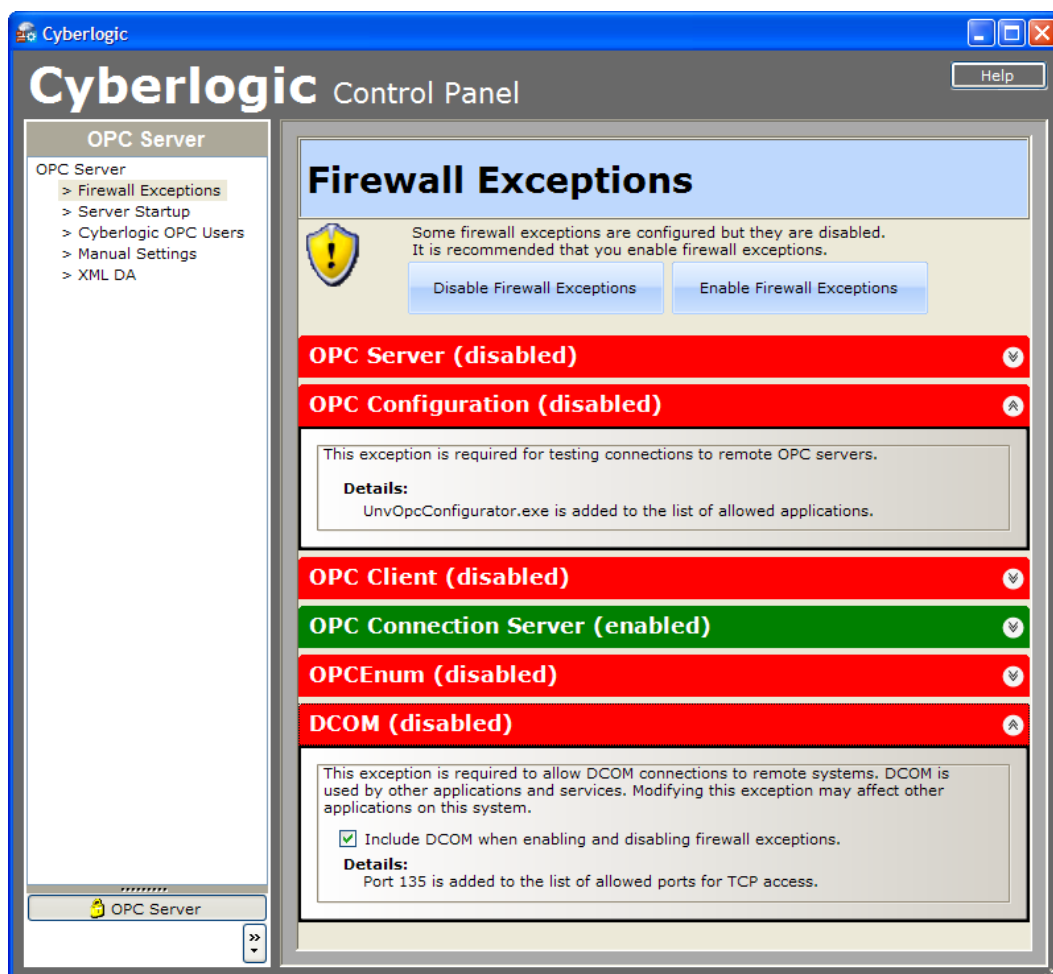


The Cyberlogic Control Panel, shown above, will open. The left pane provides a list of the functions available for configuration. The available functions will vary depending on your operating system, and the Cyberlogic software products and options you have installed.

Click on the desired item to edit it. The choices are:

- [Firewall Exceptions](#)
- [Server Startup](#)
- [Cyberlogic OPC Users](#)
- [Manual Settings](#)

Firewall Exceptions



In the tree on the left side of the window, select **Firewall Exceptions**.

Various programs and services that have been added to the Windows firewall list will be shown. However, not all of these will be enabled. Each will be labeled and color-coded to indicate whether or not it is enabled.

To show or hide information on a specific item, click on the double arrow at the right end of its bar. Doing so will open an explanation of what the item does, to help you decide whether or not you need the exception enabled. Most users should enable all of the exceptions listed.

Caution!

The firewall exceptions configured here apply only to the Windows firewall. If your system uses a third-party firewall, you must configure the exceptions to that firewall separately. This cannot be done through the Cyberlogic Control Panel.

Include when enabling and disabling firewall exceptions

Check this box if you want to be able to control the enabling of this item by clicking the Enable and Disable buttons. Not all items have this checkbox. Those that do are the ones that could affect other programs, and that you might want to control separately.

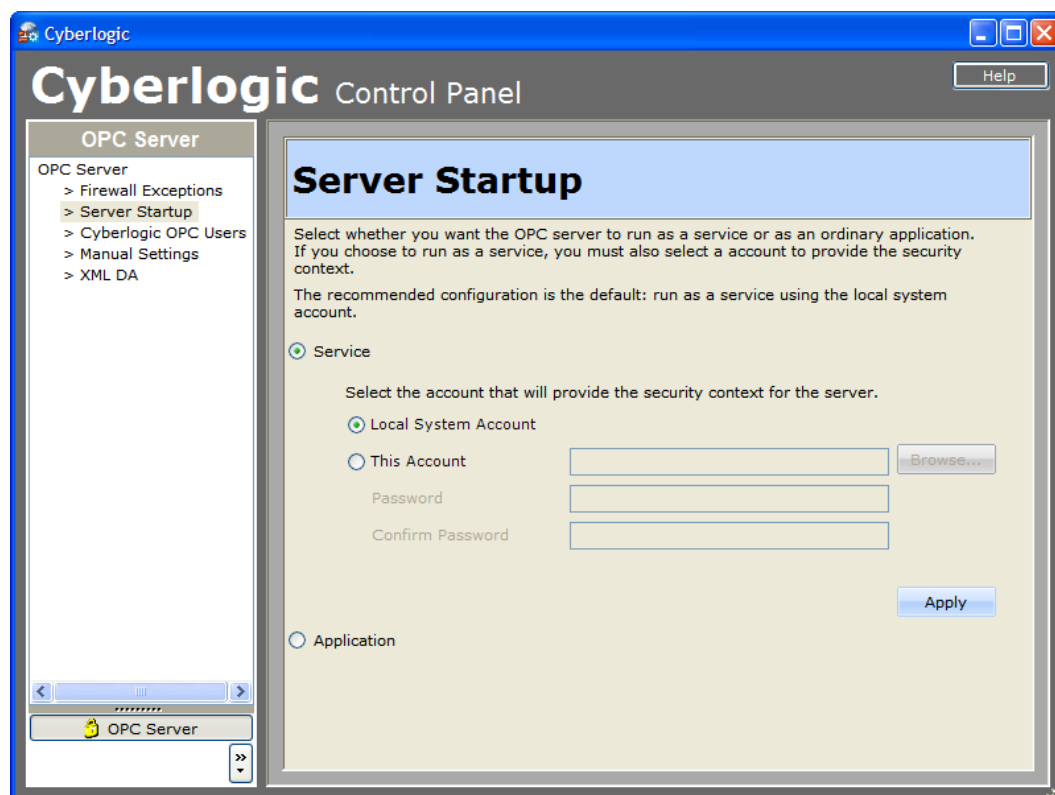
Disable Firewall Exceptions

Click to disable all items except those that have the Include box unchecked.

Enable Firewall Exceptions

Click to enable all items except those that have the Include box unchecked.

Server Startup



This screen lets you choose whether to run the server as a service or as an ordinary application. If you choose to run it as a service, you can select the account that will provide its security context.

Service

Choose this selection to run the OPC server as a service. This is the default setting, and is recommended.

If you select this option, you must also select an account to provide the security context for the server.

Local System Account

The system account is selected by default. This is the recommended setting and usually need not be changed.

This Account

Certain special situations may require you to set a separate security context for the server or use an account that has access to another system. For example, you may want to save the OPC server configuration files on another system, which would require you to use an account that has permission to access those files.

In these cases, you can use this selection to specify the account to use and its password.

Caution! You must specify a user account that has access to the OPC server configuration file.

Application

Choose this to run the OPC server as an ordinary application, rather than as a service. Running as a service is preferred, but this mode may be required for compatibility with some other software products.

Cyberlogic OPC Users



Here you can edit a group of user accounts that have permissions relating to COM applications, including the Cyberlogic OPC Server. The Cyberlogic OPC Users group is created automatically when the product is installed, and the user that installs the product is added to the group.

Using a group makes it easy and efficient to apply the needed permissions to every user who will need to run the OPC server software. It eliminates the need to edit each user individually and makes it easy to see who has the needed permissions. Unlike assigning these permissions to "Everybody", the group approach avoids giving permissions to users who do not actually need them.

Add...

Click this button to browse for users to add to the group.

Remove

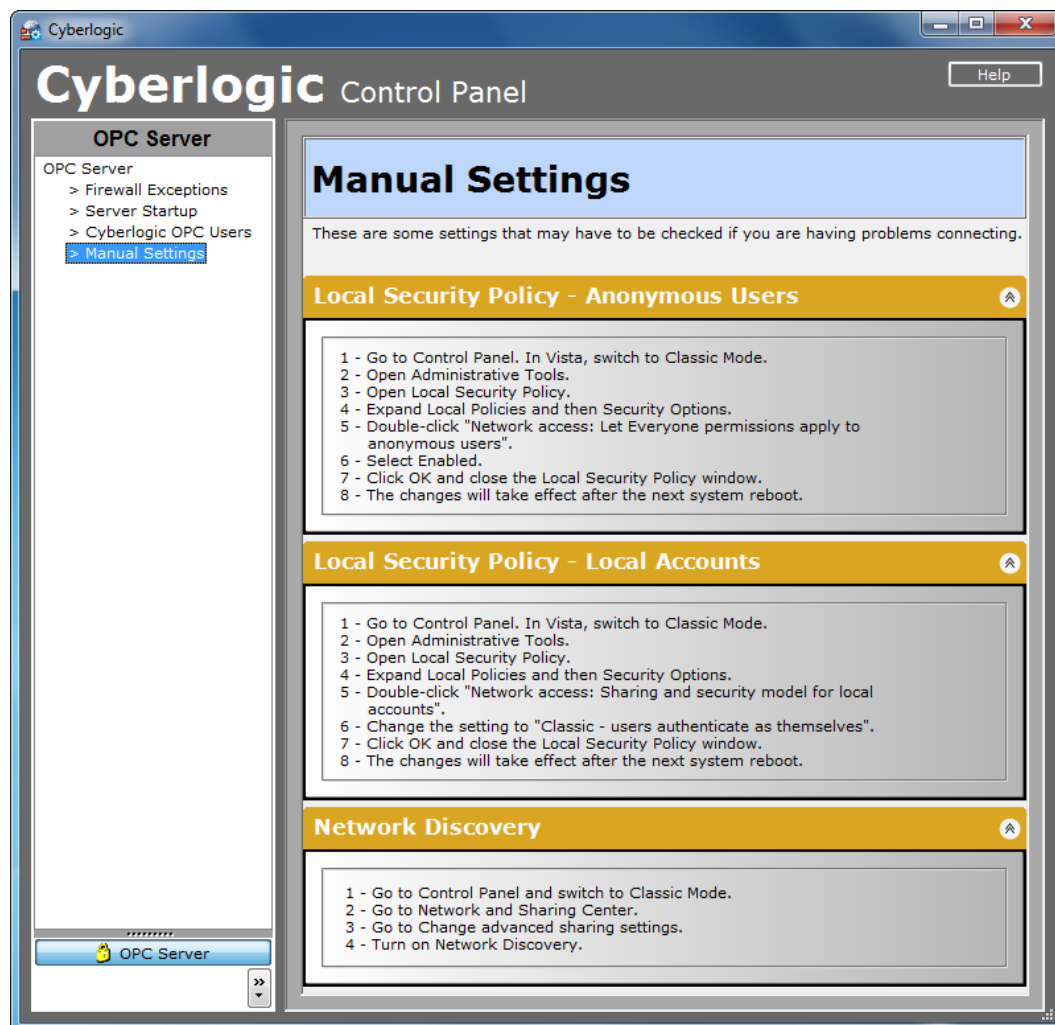
Select a user and click this button to remove that user from the group.

Permissions

Use these check boxes to assign the desired permissions to the group. The recommended setting is to have all six boxes checked.

Note

The permissions available for you to configure will vary depending on the operating system you are using. In all cases, however, the default is to allow all permissions that are shown.

Manual Settings

To edit some of the security settings, you must use the Windows Control Panel applets. The Cyberlogic Control Panel cannot edit or display these settings. Instead, we tell you how to configure the settings that most often cause OPC connection problems.

Note

The security settings that you must configure manually will vary depending on the operating system you are using. Therefore, your editing screen may look different than the one shown. Check each of the items shown for your system and set them as specified.